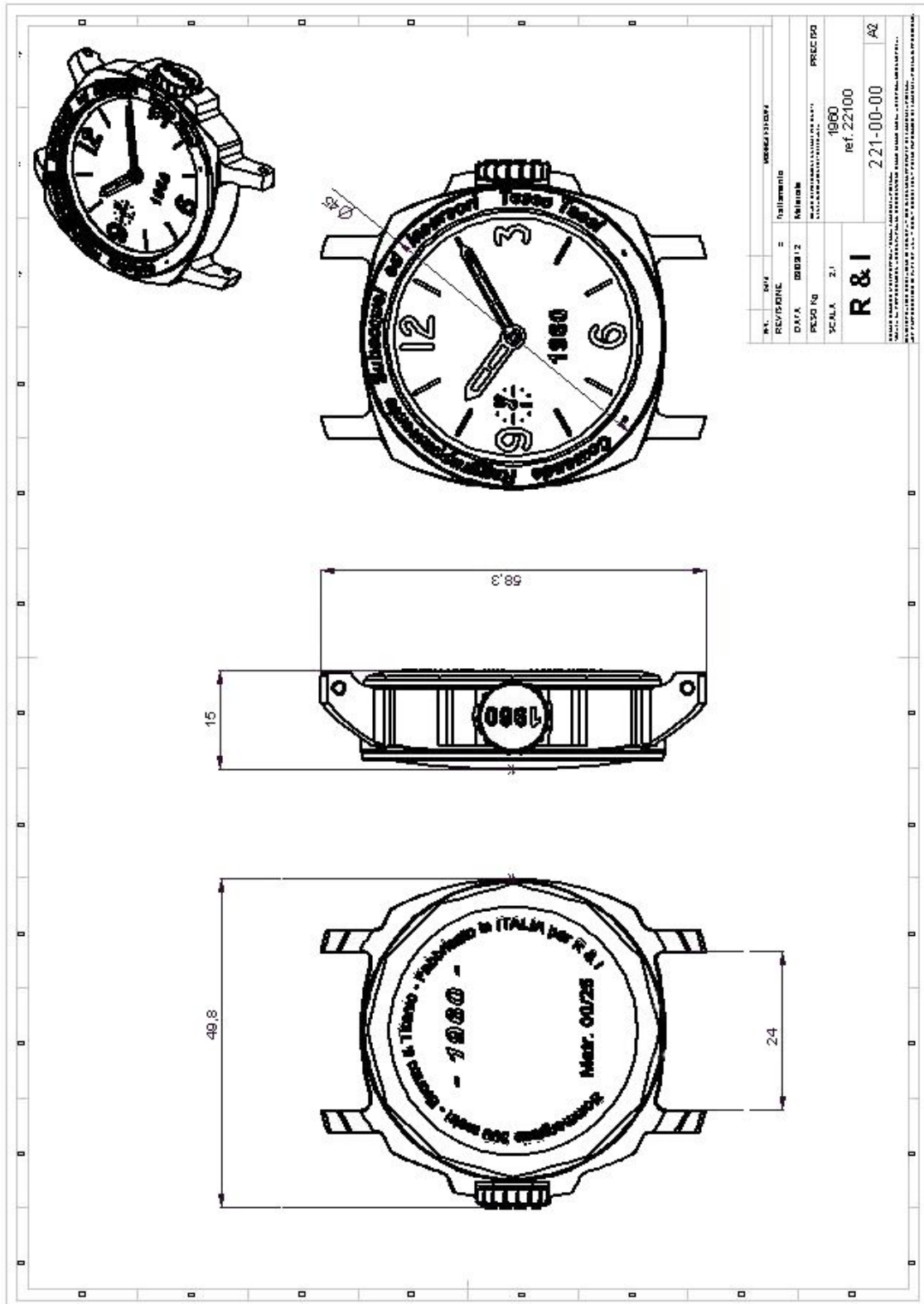




TECHNICAL SHEET

Movement	Mechanic, manual winding, ø 37,2 mm
Functions	Hours : minutes : small seconds at 9 o'clock
Power reserve	46 hours
Frequency	<ul style="list-style-type: none">▪ 18000 beats/hours▪ 17 rubies
Case (diameter)	Bronze, patinated (45 mm)
Case-back	<ul style="list-style-type: none">▪ Grade 5 titanium, screwed to the case▪ Watertightness guaranteed by o-rings
Lug size	24 mm
Diving features	Pressure-resistant and waterproof to 300 m
Crown	<ul style="list-style-type: none">▪ Bronze, gold medal▪ Watertightness secured by 2 o-rings
Crystal (width)	Flat, convex, sapphire (4.1 mm)
Dial (diameter)	Luminescent hour markers and numerals (36.4 mm)
Bezel	Fixed
Strap	Length 127 / 75



Several configurations may be possible : the technical drawing represents the basic model only.