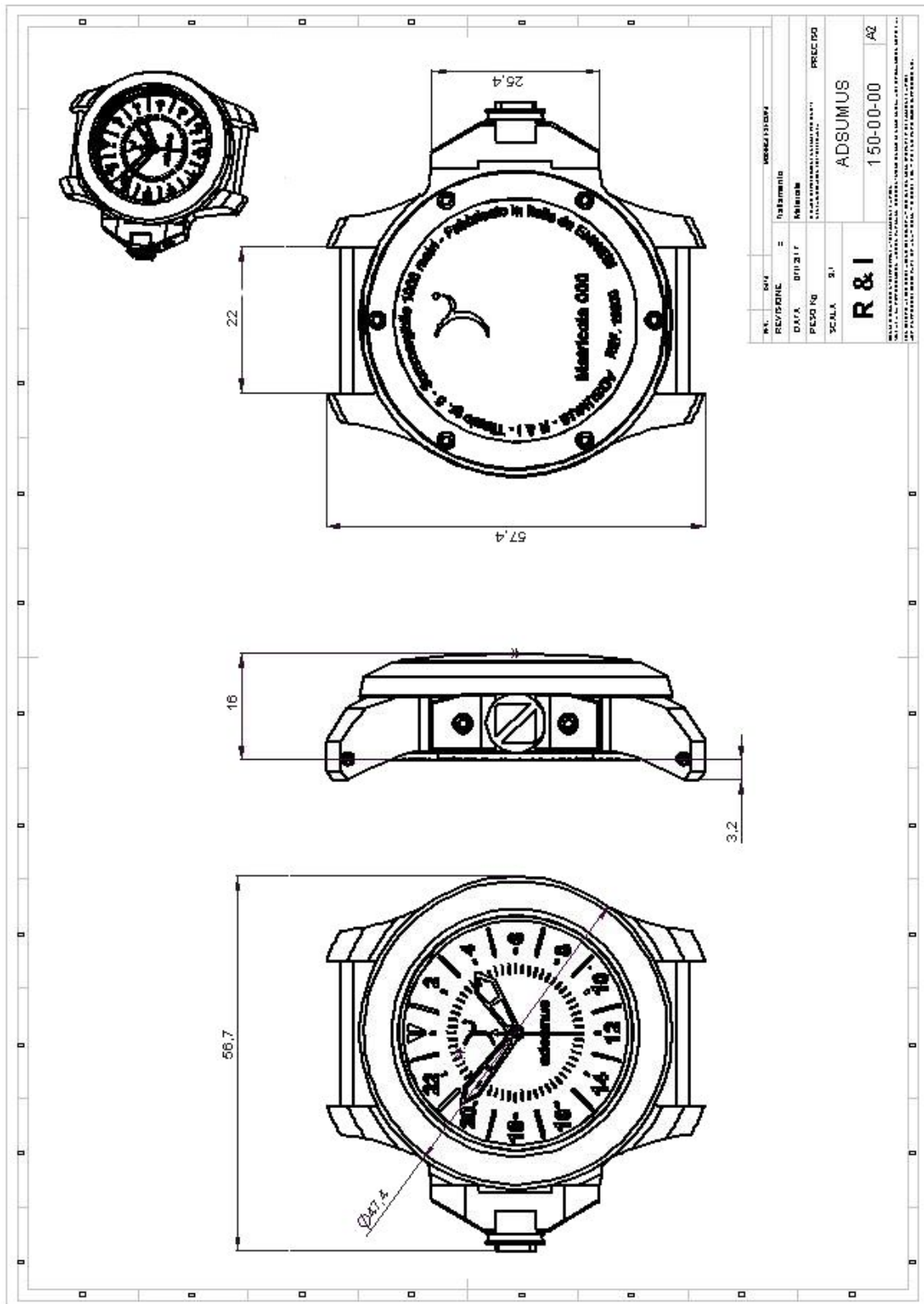




## TECHNICAL SHEET

Movement	Electronic, $\varnothing$ 26 mm
Functions	Hours : minutes : central seconds – 24h display
Battery type (life)	371 (45 months)
Case (diameter)	Grade 5 titanium, micro-peened (47 mm)
Case-back	<ul style="list-style-type: none"><li>▪ Grade 5 titanium, secured to the case by 6 DIN 912 screws</li><li>▪ Watertightness guaranteed by o-rings</li></ul>
Lug size	22 mm
Diving features	Pressure-resistant and waterproof to 1000 m
Crown	<ul style="list-style-type: none"><li>▪ At 9 o'clock, X2CrNiMo17-12-2 stainless steel, micro-peened finish</li><li>▪ Bridge crown protector, grade 5 titanium, fixed with screws to the case</li><li>▪ Watertightness secured by 2 o-rings</li></ul>
Crystal (width)	Flat, convex, sapphire
Dial (diameter)	Luminescent minute markers and numerals (34 mm)
Bezel	Fixed, grade 5 titanium
Strap	Length 125 / 75



Several configurations may be possible : the technical drawing represents the basic model only.